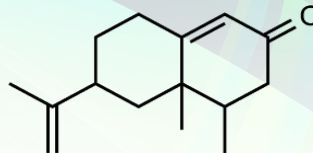


## NOOTKATONE (CRYSTALS 98+%)

2(3H)-Naphthalenone, 4,4a,5,6,7,8-hexahydro-4,4a-dimethyl-6-(1-methylethenyl)-, (4R,4aS,6R)-



**Molecular Weight:** 218.34  
**Molecular Formula:** C<sub>15</sub>H<sub>22</sub>O

**BRI Number:** 801-SUS  
**CAS Number:** 4674-50-4  
**FEMA Number:** 3166  
**FLAVIS Number:** 07.089  
**GB Number:** S0223

### FRAGRANCE APPLICATION

**Olfactive Description:** A bright, characteristically grapefruit odor.  
**Fragrance Use:** Imparts a fresh, green, grapefruit character to citrus formulations. Also has a woody, slightly herbal, and fruity aspect that can enhance a broad range of fragrances. Effective at low levels.

### DETAILS

**Suggested Use Level:** Traces - 1%  
**Tenacity on Blotter:** >1 Week

**IFRA Status:** Nootkatone used as a fragrance ingredient should be at least 98% pure with a melting point of at least 32 C. Lower purity grades may not be used as a fragrance ingredient.

### SPECIFICATIONS

**Minimum Purity:** 98.0%  
• **Main Isomer:** Not applicable  
• **Secondary Isomer:** Not applicable

**Appearance:** White crystalline solid

**Additives:** None

### TECHNICAL

**Log P:** 4.880  
**Flash Point:** 230°F (CC)  
**Boiling Point:** 298.76°C (EPI 4.0)  
**Vapor Pressure:** 0.0007 mmHg at 20°C  
**Solubility:** Insoluble in water; soluble in alcohol  
**Nature Identical:** Yes

### FLAVOR APPLICATION

**Taste Description:** Citrus, bitterness associated with grapefruit.  
**Flavor Use:** Adds bitter notes to grapefruit and other citrus flavors.

### DETAILS

**Suggested Use Level:** 10 - 20 PPM

### SPECIFICATIONS

**Minimum Purity:** 98.0%  
• **Main Isomer:** Not applicable  
• **Secondary Isomer:** Not applicable

**Appearance:** White crystalline solid

**Additives:** None

### TECHNICAL

**Log P:** 4.880  
**Flash Point:** 230°F (CC)  
**Boiling Point:** 298.76°C (EPI 4.0)  
**Vapor Pressure:** 0.0007 mmHg at 20°C  
**Solubility:** Insoluble in water; soluble in alcohol  
**Nature Identical:** Yes  
**Kosher:** No  
**Halal:** No