

Fragrance Demo Overview

2026



MATERIALS IN FRAGRANCE DEMOS

1 KIWI BASE

KIWI WITHOUT

KIWI WITH 0.10%
GUAVANATE™ (BRI# 493)

2 BLUEBERRY BOMB

BLUEBERRY BOMB WITHOUT

BLUEBERRY BOMB WITH 0.03%
3,6-NONADIENYL ACETATE (BRI# 338)

3 SOOTHING GREEN TEA

SOOTHING GREEN TEA WITHOUT

SOOTHING GREEN TEA WITH 0.03%
3-METHYL-2,4-NONANEDIONE (BRI# 841)

4 PINA COLADA

PINA COLADA WITHOUT

PINA COLADA WITH 0.10%
CEREZOATE™ (BRI# 512)

MATERIALS IN APPLICATIONS

1 **3-METHYL-2,4-NONANEDIONE (BRI# 841)**
@ 0.10% IN BODY WASH

2 **3,6-NONADIENYL ACETATE (BRI# 338)**
@ 0.10% IN SHAMPOO

3 **GUAVANATE™ (BRI# 493)**
@ 0.10% IN LAUNDRY DETERGENT

4 **CEREZOATE™ (BRI# 512)** @ 0.10% IN FABRIC SOFTENER

MATERIALS ON BLOTTER

1 **3-METHYL-2,4-NONANEDIONE (BRI# 841)**
@ 0.10% IN ETOH

2 **3,6-NONADIENYL ACETATE (BRI# 338)**
@ 1.00% IN ETOH

3 **CEREZOATE™ (BRI# 512)** @ 1.00% IN ETOH

4 **GUAVANATE™ (BRI# 493)** @ 1.00% IN ETOH

KIWI
BASE

INGREDIENTS	-	+
METHYL HEPTENONE	0.04	0.04
TRIPLAL	0.04	0.04
TRANS 2 HEXENAL	0.08	0.08
EUGENOL	0.08	0.08
IONONE ALPHA	0.08	0.08
RASPBERRY KETONE	0.08	0.08
HELIONAL	0.08	0.08
PINENE ALPHA	0.16	0.16
EUCALYPTOL	0.16	0.16
MELONAL	0.16	0.16
MOC REPLACER	0.16	0.16
METHYL ANTHRANILATE	0.16	0.16
HEDIONE	0.16	0.16
LIME DISTILLED WEST INDIA	0.16	0.16
OXANE @ 50.00% IN TEC	0.16	0.16
ISO EUGENOL	0.24	0.24
LIFFAROME™ (BRI# 122-SUS)	0.33	0.33
LINALOOL SYNTHETIC	0.33	0.33
FRUCTONE	0.90	0.90
ETHYL ACETOACETATE REDISTILLED	0.98	0.98
PHENYL ETHYL ACETATE	0.98	0.98

KIWI
BASE

INGREDIENTS	-	+
VERDOX	1.06	1.06
ETHYL CINNAMATE	1.38	1.38
ALDEHYDE C-14	1.38	1.38
COUMARIN	1.46	1.46
TONALIDE	1.63	1.63
CASSIS BASE 345F	1.63	1.63
ETHYL ACETATE	2.03	2.03
ETHYL BUTYRATE	2.03	2.03
ALLYL CAPROATE SYNTHETIC	2.03	2.03
ALDEHYDE C-16	2.03	2.03
STYRALLYL ACETATE	2.44	2.44
IONONE BETA	3.09	3.09
GALAXOLIDE @ 50.00% IN IPM	3.25	3.25
ORANGE TERPENES	4.07	4.07
ETHYL CAPROATE (ETHYL HEXANOATE)	4.39	4.39
CYCLOHEXYL BUTYRATE	4.56	4.56
GRAPEFRUIT OIL WHITE FLORIDA COLD PRESSE	8.14	8.14
ORANGE OIL FLORIDA (MID SEASON)	28.51	28.51
DIOCTYL ADIPATE	19.37	19.27
GUAVANATE™ (BRI# 493)	0.00	0.10
TOTAL	100.00	100.00

GUAVANATE™

BRI #493

Description:

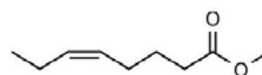
Tropical, ripe, juicy, sweet, green, fruity aroma.

Use:

Can be used to impart a crisp and clean fruity impression as well as for adding lift to the top notes of a fragrance. Contributes complexity and depth to fruity florals and tropical types, specifically guava and mango.

Fragrance Ingredient

CAS Number: 41654-15-3
FEMA Number: 4165
FLAVIS Number: 09.934
GB Number: S0941



DETAILS

Chemical Name: Methyl-cis-5-Octenoate
Suggested Use Level: Traces - 1.00%
Tenacity on Blotter: >48 Hours

Molecular Weight: 156.22
Molecular Formula: C₉H₁₆O₂

SPECIFICATIONS

Minimum Purity: 98.0% (sums of isomers)
 • **Main Isomer:** 97.0% min. (cis)
 • **Secondary Isomer:** 1.0% - 2.9% (trans)
Appearance: Colorless liquid
Additives: None

TECHNICAL

Log P: 3.105
Flash Point: 159°F (CC)
Boiling Point: 197.05°C (EPI 4.0)
Vapor Pressure: 0.28 mmHg @ 20°C
Solubility: Insoluble in water; soluble in alcohol
Nature Identical: Yes

STABILITY

pH	Base	Poor	Moderate	Good	Excellent
3	Fabric Softener				✓
3.5	Antiperspirant				✓
6	Shampoo				✓
7	Dish Detergent			✓	
9	Liquid Detergent				✓
7	Soy Wax-Burn Performance		✓		

BLUEBERRY BOMB

FRAGRANCE

INGREDIENTS	-	+
IONONE ALPHA (BRI# 469)	0.01	0.01
PARMAVERT (BRI# 310)	0.03	0.03
ORRISOL™ *3,6-Nonadienol* (BRI# 330-SUS)	0.03	0.03
DAMASCONE BETA	0.07	0.07
BENZYL SALICYLATE	0.10	0.10
HEXYL CINNAMIC ALDEHYDE	0.10	0.10
RHUBOFIX	0.10	0.10
METHYL IONONE GAMMA SUPREME	0.15	0.15
IONONE BETA	0.20	0.20
DIMETHYL BENZYL CARBINYL BUTYRATE	0.35	0.35
ETHYL OXYHYDRATE (RUM ETHER)	0.35	0.35
PHENOXY ETHYL ISO BUTYRATE	0.50	0.50
BUTYL BUTYRYL LACTATE	0.50	0.50
CASSIS BASE 345F	0.50	0.50
ETHYL ISOVALERATE	0.80	0.80
ETHYL LACTATE	0.85	0.85
VELTOL	1.50	1.50
ANISYL ACETONE	2.00	2.00
VANILLIN	2.00	2.00
ETHYL VANILLIN	2.00	2.00
VELTOL PLUS	2.50	2.50
ALDEHYDE C-16	3.00	3.00
BENZYL ACETATE	3.00	3.00
ALDEHYDE C-14	3.05	3.05
LINALOOL SYNTHETIC	4.00	4.00
ORANGE OIL FLORIDA	5.00	5.00
RASPBERRY KETONE	6.00	6.00
DIPROPYLENE GLYCOL	25.00	25.00
BENZYL BENZOATE	36.31	36.28
e,z-3,6-Nonadienyl acetate (BRI# 338)	0.00	0.03
TOTAL	100.00	100.00

3,6-NONADIENYL ACETATE

BRI #338

DESCRIPTION:

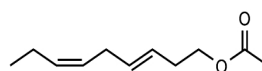
A soft, fresh, green odor.

USE:

Green slightly fatty odor that adds floralcy to middle notes of floral compositions.

Fragrance Ingredient

CAS Number: 76649-26-8
FEMA Number: 3953
FLAVIS Number: 9.674
GB Number: Not listed



DETAILS

Chemical Name: 3,6-Nonadien-1-ol, acetate
Suggested Use Level: Traces - 2%
Tenacity on Blotter: > 48 hours

Molecular Weight: 182.26
Molecular Formula: C₁₁H₁₈O₂

SPECIFICATIONS

Minimum Purity: 95.0% (sum of isomers)
 • **Main Isomer:** 95.0% min.(e,z)
 • **Secondary Isomer:** 0.1% - 5.0%(e,e)

TECHNICAL

Log P: 3.87
Flash Point: 180°F (CC)
Boiling Point: 240.90°C (EPI 4.0)
Vapor Pressure: 0.0283 mmHg at 20°C (EPI 4.0)

Appearance: Colorless to pale yellow liquid

Solubility: Insoluble in water;
soluble in alcohol.

Additives: Synthetic alpha tocopherol at 0.10%

Nature Identical: YES

STABILITY

pH	Base	Poor	Moderate	Good	Excellent
3	Fabric Softener				✓
3.5	Antiperspirant				✓
6	Shampoo				✓
7	Dish Detergent			✓	
9	Liquid Detergent			✓	
7	Soy Wax-Burn Performance				✓

SOOTHING GREEN TEA

ACCORD

INGREDIENTS	-	+
GAMMA OCTALACTONE	0.03	0.03
DAMASCONE ALPHA	0.05	0.05
DAMASCONE BETA	0.05	0.05
gamma-NONALACTONE (ALDEHYDE C-18)	0.05	0.05
INDOLE	0.10	0.10
TRANS 2 HEXENAL @ 10.00% IN DPG	0.14	0.14
ISO EUGENOL	0.15	0.15
CIS-3-HEXENOL (LEAF ALCOHOL) (BRI# 101)	0.20	0.20
METHYL HEPTENONE	0.30	0.30
BENZALDEHYDE	0.40	0.40
EUGENOL	0.50	0.50
CIS JASMONE (BRI# 400)	0.50	0.50
LINALOOL OXIDE	0.50	0.50
HYDROFLEUR® (BRI# 279-SUS)	0.60	0.60
PHENYL ACETALDEHYDE PURE	0.70	0.70
COUMARIN	1.00	1.00
GUAICWOOD ACETATE	1.00	1.00
DIMETHYL BENZYL CARBINYL ACETATE	2.00	2.00
GERANYL ACETATE	2.00	2.00
IONONE BETA	2.00	2.00
HEDIONE	3.00	3.00
MENTHOL RACEMIC	5.00	5.00
GALAXOLIDE @ 50.00% IN IPM	5.00	5.00
PHENYL ETHYL ALCOHOL	5.00	5.00
gamma-UNDECALACTONE (ALDEHYDE C-14)	6.00	6.00
TETRAHYDRO LINALOOL	6.00	6.00
GERANIOL	7.00	7.00
LINALOOL SYNTHETIC	8.00	8.00
TERPINEOL, ALPHA	8.00	8.00
DIPROPYLENE GLYCOL	34.73	34.70
3-METHYL-2,4-NONANEDIONE (BRI# 841)	0.00	0.03
TOTAL	100.00	100.00

3-METHYL-2,4-NONANEDIONE

BRI #841

Description:

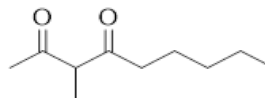
An anisic spicy herbal green lactonic aroma

Use:

Adds an anisic herbal green spicy note

Fragrance Ingredient

CAS Number: 113486-29-6
FEMA Number: 4057
FLAVIS Number: 07.184
GB Number: S1339



DETAILS

Chemical Name: 3-Methyl-2,4-Nonanedione
Suggested Use Level: Traces to 1%
Tenacity on Blotter: > 48 hrs

Molecular Weight: 170.25
Molecular Formula: C₁₀H₁₈O₂

SPECIFICATIONS

Minimum Purity: 97.0%
 • **Main Isomer:** Not applicable
 • **Secondary Isomer:** Not applicable
Appearance: Colorless to yellow liquid

TECHNICAL

Log P: 2.370
Flash Point: 210°F (CC)
Boiling Point: 230.56°C (EPI 4.0)
Vapor Pressure: 0.0777 mmHg at 20°C
Solubility: H₂O 1.4 g/L at 20 C
Nature Identical: Yes
Kosher: Yes
Halal: Yes

Additives: Synthetic alpha tocopherol at 0.10%

STABILITY

pH	Base	Poor	Moderate	Good	Excellent
3	Fabric Softener				✓
3.5	Antiperspirant				✓
6	Shampoo			✓	
7	Dish Detergent				✓
9	Liquid Detergent			✓	
7	Soy Wax-Burn Performance				✓

PINA COLADA

FRAGRANCE

INGREDIENTS	-	+
VELTOL	0.10	0.10
ETHYL PROPIONATE	0.20	0.20
DELTA DECALACTONE	1.07	1.07
ALDEHYDE C-16	2.70	2.70
ETHYL VANILLIN	4.30	4.30
LEMON OIL CALIFORNIA COLD PRESSED	4.30	4.30
GAMMA OCTALACTONE	4.30	4.30
VANILLIN	4.30	4.30
ALLYL CAPROATE SYNTHETIC	8.60	8.60
ALLYL PHENOXYACETATE	8.60	8.60
ALLYL CYCLOHEXYL PROPIONATE	8.60	8.60
ETHYL CAPROATE (ETHYL HEXANOATE)	8.60	8.60
ORANGE OIL FLORIDA (MID SEASON)	8.60	8.60
gamma-NONALACTONE (ALDEHYDE C-18)	27.00	27.00
TRIETHYL CITRATE	8.73	8.63
CEREZOATE™ (BRI# 512)	0.00	0.10
TOTAL	100.00	100.00

CEREZOATE™

BRI #512

Description:

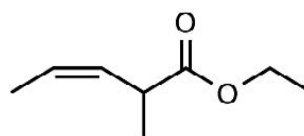
A fruity, ethereal, juicy note with natural black cherry nuances.

Use:

A melange of juicy pineapple, apple, blueberry, and especially black cherry. Excellent in air care, shampoos, and dish detergent.

Fragrance Ingredient

CAS Number: 1617-23-8
FEMA Number: 3456
FLAVIS Number: 09.524
GB Number: S1212



DETAILS

Chemical Name: 3-Pentenoic acid, 2-methyl-, ethyl ester
Suggested Use Level: Traces - 1.00%
Tenacity on Blotter: >1 Hour

Molecular Weight: 142.19
Molecular Formula: C₈H₁₄O₂

SPECIFICATIONS

Minimum Purity: 99.0% (sums of isomer)
 • **Main Isomer:** 98.5% min. (cis)
 • **Secondary Isomer:** 0.1% - 1.5% (trans)
Appearance: Colorless liquid
Additives: Synthetic alpha tocopherol at 0.10%

TECHNICAL

Log P: 2.540
Flash Point: 110°F (CC)
Boiling Point: 163.76°C (EPI 4.0)
Vapor Pressure: 1.49 mmHg at 20°C
Solubility: Insoluble in water; soluble in alcohol
Nature Identical: No

STABILITY

pH	Base	Poor	Moderate	Good	Excellent
3	Fabric Softener				✓
3.5	Antiperspirant				✓
6	Shampoo				✓
7	Dish Detergent			✓	
9	Liquid Detergent				✓
7	Soy Wax-Burn Performance				✓

2026 Featured Fragrance Ingredients



BRI #	CAS #	Product/Chemical Name	Odor Description	Odor Level
279-SUS	62439-42-3	HYDROFLEUR® 6-Hydroxy-2,6-dimethylheptanal	A powerful, fresh, watery, and ozonic effect combined with fruity shades of raspberry and melon.	10.00%
287	10486-19-8	TRIDECANAL	A powerful waxy, citrus odor with a hint of grapefruit.	1.00%
310	13257-44-8	PARMAVERT™ 2-Nonylnal dimethyl acetal	A powerful green, floral, violet leaf odor.	1.00%
317	67674-36-6	e,z-2,6-NONADIEN-1-AL DIETHYL ACETAL	A smooth violet, melon odor.	0.10%
330-SUS	76649-25-7	ORRISOL™ 3,6-Nonadienol	A green, cucumber, floral with orris and honeydew melon notes.	5.00%
338	76649-26-8	3,6-NONADIEN-1-YL ACETATE	A soft, fresh, green odor.	1.00%
356-SUS	20407-84-5	VALENCIAL® FCC trans-2-Dodecenal	Aldehydic with peely, orange, waxy notes.	1.00%
359	41547-22-2	CANTALAL™ cis-5-Octenal	A powerful watermelon note with a slight citrus nuance.	0.10%
381	21662-09-9	CARDAMOM ALDEHYDE™ FCC cis-4-Decenal	A unique spicy, aldehydic, citrus note that is reminiscent of the exhilarating odor of freshly crushed cardamom pods.	1.00%
387	21944-98-9	TANGELAL® cis-4-Dodecenal	Aldehydic with peely, fresh notes of tangerine and orange.	1.00%
410	68133-79-9	APRITONE® 2-(3,7-dimethyl-2,6-octadienyl)-Cyclopentanone	Warm, apricot and peach flesh fragrance with a jasmine and jam like quality.	10.00%
411-SUS	70851-61-5	LACTONE OF CIS JASMONE™ 2(3H)-Furanone, 5-(3Z)-3-hexenyldihydro-5-methyl-	A soft, jasmine, white floral aroma with creamy lactonic notes.	10.00%
493	41654-15-3	GUAVANATE™ Methyl z-5-octenoate	Tropical, ripe, juicy, sweet green, fruity scent.	1.00%
512	1617-23-8	CEREZOATE™ Ethyl 2-methyl-3-pentenoate	A fruity, ethereal, juicy note with natural black cherry nuances.	1.00%
535	189440-77-5	METHYL ANJOULATE 4,7-Octadienoic acid, methyl ester, (4E)-	Smooth, natural, green, sweet anjou pear with sugary notes.	5.00%
614	4643-27-0	2-OCTEN-4-ONE 2-Octen-4-one	A powerful, green, fruity aroma with pineapple and berry notes.	1.00%
640DPG	MIXTURE	VIONIL™ (10% IN DIPROPYLENE GLYCOL) 2,6-Nonadienenitrile	Powerful green cucumber and violet leaf with orris notes.	1.00%
728	26516-27-8	NUEZATE™ Ethyl 3-methyl-2-oxopentanoate	A gourmand, sweet, nutty, walnut and hazelnut scent with a spicy, fruity, and maple undertone.	1.00%
818-SUS	18368-91-7	TERRASOL™ FCC 2-Ethyl fenchol	A diffusive, earthy, woody, camphoraceous, piney and patchouli fragrance.	1.00%
831	68527-76-4	ETHYL VANILIN PROPYLENE GLYCOL ACETAL	A vanilla odor with a spicy, clove like undertone.	5.00%
841	113486-29-6	3-METHYL-2,4-NONANEDIONE	An anisic spicy herbal green lactonic aroma.	0.10%
857-SUS	35158-25-9	LAVENDER ALDEHYDE™ FCC 2-Isopropyl-5-methyl-2-hexenal	A powerful, natural, and herbaceous character with hints of cocoa, bergamot, and lavender.	1.00%
962	30640-46-1	LIMEDIENE™ Methyl cyclohexadiene	Powerful diffusive lemon lime, zesty top note.	0.10%
9840	1617-23-8	FRUITALEUR™ Ethyl 2-methyl-3-pentenoate	A fruity-tropical, ethereal character with subtle notes of pear and pineapple.	1.00%

Fragrance Demo Overview

2026



MATERIALS IN FRAGRANCE DEMOS

1 KIWI BASE

KIWI WITHOUT

KIWI WITH 0.10%
GUAVANATE™ (BRI# 493)

2 BLUEBERRY BOMB

BLUEBERRY BOMB WITHOUT

BLUEBERRY BOMB WITH 0.03%
3,6-NONADIENYL ACETATE (BRI# 338)

3 SOOTHING GREEN TEA

SOOTHING GREEN TEA WITHOUT

SOOTHING GREEN TEA WITH 0.03%
3-METHYL-2,4-NONANEDIONE (BRI# 841)

4 PINA COLADA

PINA COLADA WITHOUT

PINA COLADA WITH 0.10%
CEREZOATE™ (BRI# 512)

MATERIALS IN APPLICATIONS

1 **3-METHYL-2,4-NONANEDIONE (BRI# 841)**
@ 0.10% IN BODY WASH

2 **3,6-NONADIENYL ACETATE (BRI# 338)**
@ 0.10% IN SHAMPOO

3 **GUAVANATE™ (BRI# 493)**
@ 0.10% IN LAUNDRY DETERGENT

4 **CEREZOATE™ (BRI# 512)** @ 0.10% IN FABRIC SOFTENER

MATERIALS ON BLOTTER

1 **3-METHYL-2,4-NONANEDIONE (BRI# 841)**
@ 0.10% IN ETOH

2 **3,6-NONADIENYL ACETATE (BRI# 338)**
@ 1.00% IN ETOH

3 **CEREZOATE™ (BRI# 512)** @ 1.00% IN ETOH

4 **GUAVANATE™ (BRI# 493)** @ 1.00% IN ETOH