

# LIMEDIENE™

**BRI #962**

## Description:

Powerful diffusive lemon lime zesty top note.

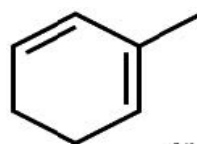
## Use:

A unique combination of lemon-lime, tropical, marine, and watery notes. Excellent top note in imparting freshness and boosting green floral notes. Great in cool water types.

*This product contains 0.3% Toluene as an unavoidable production related impurity. The following applies to Toluene in fragrance compounds/mixtures: The level of Toluene has to be kept as low as practicable and should never exceed 100 ppm in the fragrance compound/mixture or fragrance oil.*

## Fragrance Ingredient

**CAS Number:** 30640-46-1  
**FEMA Number:** 4311  
**FLAVIS Number:** Not applicable  
**GB Number:** Not listed



and Isomers

## DETAILS

**Chemical Name:** Cyclohexadiene, methyl-  
**Suggested Use Level:** Traces - 1.00%  
**Tenacity on Blotter:** <10 minutes

**Molecular Weight:** 94.15  
**Molecular Formula:** C<sub>7</sub>H<sub>10</sub>

## SPECIFICATIONS

**Minimum Purity:** 98.0%  
• **Main Isomer:** Not applicable  
• **Secondary Isomer:** Not applicable  
**Appearance:** Colorless to pale yellow liquid  
**Additives:** Synthetic alpha tocopherol at 0.10%

## TECHNICAL

**Log P:** 3.290  
**Flash Point:** 35°F (CC)  
**Boiling Point:** 117.82°C (EPI 4.0)  
**Vapor Pressure:** 15.6 mmHg at 20°C  
**Solubility:** Insoluble in water  
**Nature Identical:** Yes

## STABILITY

pH	Base	Poor	Moderate	Good	Excellent
3	Fabric Softener			x	
3.5	Antiperspirant				x
6	Shampoo				x
7	Dish Detergent				x
9	Liquid Detergent			x	
7	Soy Wax-Burn Performance				x