

LAVENDER ALDEHYDE™ FCC

BRI #857-SUS

Description:

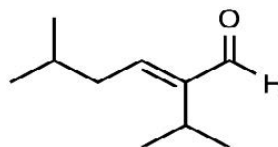
A powerful, natural, and herbaceous character with hints of cocoa, bergamot, and lavender.

Use:

Powerful and diffusive. Blends well with bergamot, clary sage, and citrus types. Can be used to boost ozonic notes in fragrances. Excels in floral and gourmand compositions, specifically lavender and chocolate.

Fragrance Ingredient

CAS Number: 35158-25-9
FEMA Number: 3406
FLAVIS Number: 05.107
GB Number: S0134



DETAILS

Chemical Name: 2-Hexenal, 5-Methyl-2-(1-Methylethyl)-
Suggested Use Level: 1.00 - 5.00%
Tenacity on Blotter: >8 Hours

Molecular Weight: 154.24
Molecular Formula: C₁₀H₁₈O

SPECIFICATIONS

Minimum Purity: 96.0% (sum of isomers)
• **Main Isomer:** 60.0% min. (trans iso)
• **Secondary Isomer:** 20.0% - 40.0% (cis isomer)
Appearance: Pale yellow liquid
Additives: Synthetic alpha tocopherol @ 0.50%

TECHNICAL

Log P: 3.460
Flash Point: 155°F (CC)
Boiling Point: 193.04°C (estimated)
Vapor Pressure: 0.348 mmHg at 20°C
Solubility: Insoluble in water; soluble in alcohol
Nature Identical: Yes

STABILITY

pH	Base	Poor	Moderate	Good	Excellent
3	Fabric Softener			x	
3.5	Antiperspirant			x	
6	Shampoo				x
7	Dish Detergent			x	
9	Liquid Detergent			x	
7	Soy Wax-Burn Performance				x