

# CEREZOATE™

BRI #512

## Description:

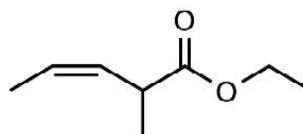
A fruity, ethereal, juicy note with natural black cherry nuances.

## Use:

A melange of juicy pineapple, apple, blueberry, and especially black cherry. Excellent in air care, shampoos, and dish detergent.

## Fragrance Ingredient

**CAS Number:** 1617-23-8  
**FEMA Number:** 3456  
**FLAVIS Number:** 09.524  
**GB Number:** S1212



## DETAILS

**Chemical Name:** 3-Pentenoic acid, 2-methyl-, ethyl ester  
**Suggested Use Level:** Traces – 1.00%  
**Tenacity on Blotter:** >1 Hour

**Molecular Weight:** 142.19  
**Molecular Formula:** C<sub>8</sub>H<sub>14</sub>O<sub>2</sub>

## SPECIFICATIONS

**Minimum Purity:** 99.0% (sums of isomer)  
• **Main Isomer:** 98.5% min. (cis)  
• **Secondary Isomer:** 0.1% – 1.5% (trans)  
**Appearance:** Colorless liquid  
**Additives:** Synthetic alpha tocopherol at 0.10%

## TECHNICAL

**Log P:** 2.540  
**Flash Point:** 110°F (CC)  
**Boiling Point:** 163.76°C (EPI 4.0)  
**Vapor Pressure:** 1.49 mmHg at 20°C  
**Solubility:** Insoluble in water; soluble in alcohol  
**Nature Identical:** No

## STABILITY

pH	Base	Poor	Moderate	Good	Excellent
3	Fabric Softener			x	
3.5	Antiperspirant			x	
6	Shampoo			x	
7	Dish Detergent			x	
9	Liquid Detergent			x	
7	Soy Wax-Burn Performance	x			