

LACTONE OF cis JASMONE

BRI #411

Description:

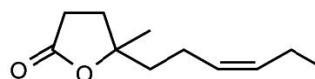
A soft, jasmine, white floral aroma with creamy lactonic notes.

Use:

Sophisticated jasmine absolute notes for a beautiful, long-lasting effect. Used primarily to impart natural, soft petal-like properties to floral types, especially white florals.

Fragrance Ingredient

CAS Number: 70851-61-5
FEMA Number: 3937
FLAVIS Number: 07.257
GB Number: Not approved



DETAILS

Chemical Name: 2(3H)-Furanone, 5-(3Z)-3-hexenylidihydro-5-methyl-
Suggested Use Level: Traces - 1.0%
Tenacity on Blotter: >48 Hours

Molecular Weight: 182.26
Molecular Formula: C₁₁H₁₈O₂

SPECIFICATIONS

Minimum Purity: 97.0% (sum of isomers)
 • **Main Isomer:** 95.0% min. (cis)
 • **Secondary Isomer:** 0.1% - 5.0%
Appearance: Colorless to pale yellow liquid
Additives: Synthetic alpha tocopherol at 0.10%

TECHNICAL

Log P: 2.810
Flash Point: 276°F (CC)
Boiling Point: 293.75°C (EPI 4.0)
Vapor Pressure: 0.001 mmHg @ 20°C
Solubility: Insoluble in water; soluble in alcohol
Nature Identical: No

STABILITY

pH	Base	Poor	Moderate	Good	Excellent
3	Fabric Softener			x	
3.5	Antiperspirant			x	
6	Shampoo		x		
7	Dish Detergent			x	
9	Liquid Detergent			x	
7	Soy Wax-Burn Performance		x		