

# APRITONE®

**BRI #410**

## Description:

Warm apricot, peach flesh with a jasmine-based and jam-like quality.

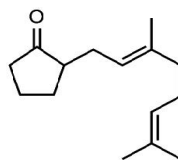
## Use:

Extremely long lasting with a rare fruity and natural character. Makes a significant contribution to peach and jasmine based fragrances. Excellent in fruity complexes for skin and fine fragrances.

*This product contains beta-damascone (a rose ketone). The rose ketones have an IFRA standard associated with them. The amount of beta-damascone is as follows: up to 0.05%. Visit [www.ifrafragrance.org](http://www.ifrafragrance.org) for the full text of the standard or contact Bedoukian Research for more information.*

## Fragrance Ingredient

**CAS Number:** 68133-79-9  
**FEMA Number:** 3829  
**FLAVIS Number:** 07.257  
**GB Number:** Not listed



## DETAILS

**Chemical Name:** 2-(3,7-dimethyl-2,6-octadien-1-yl)-Cyclopentanone  
**Suggested Use Level:** 1.00 - 5.00%  
**Tenacity on Blotter:** >1 Week

**Molecular Weight:** 220.35  
**Molecular Formula:** C<sub>15</sub>H<sub>24</sub>O

## SPECIFICATIONS

**Minimum Purity:** 96.5% (sum of isomers)  
• **Main Isomer:** 50.0% min.  
• **Secondary Isomer:** 30.0% - 50.0%  
**Appearance:** Colorless to pale yellow liquid  
**Additives:** Synthetic alpha tocopherol at 0.10%

## TECHNICAL

**Log P:** 5.600  
**Flash Point:** 282°F (CC)  
**Boiling Point:** 298.5°C (EPI 4.0)  
**Vapor Pressure:** 786.5 Pa OECD 104 @ 21.1°C  
**Solubility:** Insoluble in water; soluble in alcohol  
**Nature Identical:** No

## STABILITY

pH	Base	Poor	Moderate	Good	Excellent
3	Fabric Softener			✓	
3.5	Antiperspirant			✓	
6	Shampoo				✓
7	Dish Detergent			✓	
9	Liquid Detergent			✓	
7	Soy Wax-Burn Performance		✓		