

APRITONE[®]

BRI #410

Description:

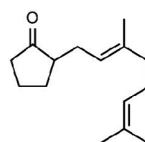
Smooth, pulpy apricot with a sweet, pit fruit character.

Use:

Excellent in pit fruit flavors such as apricot, juicy peach, ume, lychee, cherry, plum, and grape.

FLAVOR INGREDIENT

CAS Number: 68133-79-9
FEMA Number: 3829
FLAVIS Number: 07.257
GB Number: Not Listed



DETAILS

Chemical Name: Cyclopentanone, 2-(3,7-dimethyl-2,6-octadienyl)-
Suggested Use Level: 0.50 - 10.00 PPM

Molecular Weight: 220.35
Molecular Formula: C₁₅H₂₄O

SPECIFICATIONS

Minimum Purity: 96.5% (sum of isomers)
• **Main Isomer:** 50.0% min.
• **Secondary Isomer:** 30.0% - 50.0%
Appearance: Colorless to pale yellow liquid
Additives: synthetic alpha tocopherol at 0.10%

TECHNICAL

Log P: 5.600
Flash Point: 282°F (CC)
Boiling Point: 298.5°C (EPI 4.0)
Vapor Pressure: 786.5 Pa OECD 104 at 21.1°C
Solubility: Insoluble in water; soluble in alcohol
Nature Identical: No
Kosher: Yes
Halal: Yes