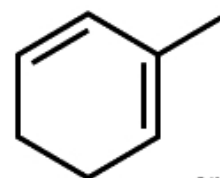




LIMEDIENE

BRI 962

CAS Number:	30640-46-1
FEMA Number:	4311
FLAVIS Number:	Not approved
GB Number:	Not listed
Molecular Weight:	94.15
Molecular Formula:	C ₇ H ₁₀
Chemical Name:	Methyl Cyclohexadiene



and Isomers

APPLICATION

Olfactive Description: An extremely powerful lemon-lime top note with a unique combination of tropical and watery notes drying down to an exquisite white truffle.

Fragrance Use: Short-lived but highly impactful with effects seen as low as 0.01%. Can be used to add freshness and power to any application. Adds an extraordinary bloom and spark to citrus, floral and cool water types. Performs extremely well in liquid dish detergent, shower gels, air care, and laundry detergent.

Suggested Use Level: Traces - 1.0%

Tenacity on Blotter: <10 Minutes

SPECIFICATIONS

Minimum Purity:	98.0%
• Main Isomer:	Not applicable
• Secondary Isomer:	Not applicable
Appearance:	Colorless to pale yellow liquid
Additives:	Synthetic alpha tocopherol at 0.10%

TECHNICAL

Log P:	3.29
Flash Point:	33°F (CC)
Boiling Point:	117.82°C (EPI 4.0)
Vapor Pressure:	15.6 mmHg at 20°C
Solubility:	Insoluble in water
Nature Identical:	Yes

STABILITY

pH	Base	Poor	Moderate	Good	Excellent
3	Fabric Softener			x	
3.5	Antiperspirant				x
6	Shampoo				x
7	Dish Detergent				x
9	Liquid Detergent			x	
-	Soy Wax -- Burn Performance				x