

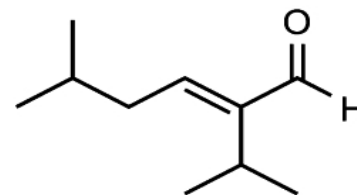


## LAVENDER ALDEHYDE FCC

BRI 857

**CAS Number:** 35158-25-9  
**FEMA Number:** 3406  
**FLAVIS Number:** 05.107  
**GB Number:** S0134

**Molecular Weight:** 154.24  
**Molecular Formula:** C<sub>10</sub>H<sub>18</sub>O  
**Chemical Name:** 2-Hexenal, 5-Methyl-2-(1-Methylethyl)-



### APPLICATION

**Olfactive Description:** A powerful woody (cedar), herbaceous aroma with a hint of blueberry.

**Fragrance Use:** Powerful and diffusive. Blends well with bergamot, clary sage, and citrus types. Can be used to boost ozonic notes in fragrances. Excels in floral and gourmand compositions, specifically lavender and chocolate.

**Suggested Use Level:** 1.0% - 5.0%

**Tenacity on Blotter:** >8 Hours

### SPECIFICATIONS

**Minimum Purity:** 96.0% (sum of isomers)

- **Main Isomer:** 60.0% min.
- **Secondary Isomer:** 20.0% - 40.0%

**Appearance:** Pale yellow liquid

**Additives:** Synthetic alpha tocopherol at 0.50%

### TECHNICAL

**Log P:** 3.46

**Flash Point:** 155°F (CC)

**Boiling Point:** 193.04°C (EPI 4.0)

**Vapor Pressure:** 0.348 mmHg at 20°C

**Solubility:** Insoluble in water; soluble in alcohol

**Nature Identical:** Yes

### STABILITY

pH	Base	Poor	Moderate	Good	Excellent
3	Fabric Softener			x	
3.5	Antiperspirant			x	
6	Shampoo				x
7	Dish Detergent			x	
9	Liquid Detergent			x	
-	Soy Wax -- Burn Performance				x