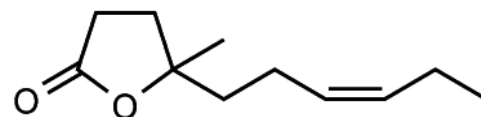




LACTONE OF CIS JASMONE

BRI 411

CAS Number: 70851-61-5
FEMA Number: 3937
FLAVIS Number: 10.061
GB Number: Not approved



Molecular Weight: 182.26
Molecular Formula: C₁₁H₁₈O₂
Chemical Name: (Z)-5-Hex-3-enylidihydro-5-methylfuran-2(3H)-one

APPLICATION

Olfactive Description: A clean, fruity and comfortable jasmine absolute note.

Fragrance Use: Sophisticated jasmine absolute notes for a beautiful, long-lasting effect. Used primarily to impart natural, soft petal-like properties to floral types, especially white florals.

Suggested Use Level: Traces - 1.0%

Tenacity on Blotter: >48 Hours

SPECIFICATIONS

Minimum Purity: 97.0% (sum of isomers)

- **Main Isomer:** 95.0% min. (cis)
- **Secondary Isomer:** 0.1% - 5.0% (trans)

Appearance: Colorless to pale yellow liquid

Additives: Synthetic alpha tocopherol at 0.10%

TECHNICAL

Log P: 2.81

Flash Point: 276°F (CC)

Boiling Point: 293.75°C (EPI 4.0)

Vapor Pressure: 0.00137 mmHg at 20°C

Solubility: H₂O = 215.6 mg/L at 25°C; soluble in alcohol

Nature Identical: No

STABILITY

pH	Base	Poor	Moderate	Good	Excellent
3	Fabric Softener			x	
3.5	Antiperspirant			x	
6	Shampoo		x		
7	Dish Detergent			x	
9	Liquid Detergent			x	
-	Soy Wax -- Burn Performance		x		