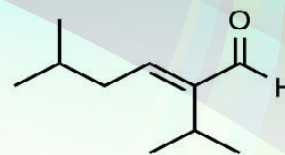


## LAVENDER ALDEHYDE™ FCC

### 2-Hexenal, 5-Methyl-2-(1-Methylethyl)-



**BRI Number:** 857-SUS  
**CAS Number:** 35158-25-9  
**FEMA Number:** 3406  
**FLAVIS Number:** 05.107  
**GB Number:** S0134

**Molecular Weight:** 154.24  
**Molecular Formula:** C<sub>10</sub>H<sub>18</sub>O

### FRAGRANCE APPLICATION

**Olfactive Description:** Has a very powerful, natural, and herbaceous character with hints of cocoa, bergamot, and lavender overtones.

**Fragrance Use:** Powerful and diffusive, blends well with bergamot, clary sage, and citrus types. Excels in floral and gourmand compositions, specifically lavender and chocolate. Also great in fougere types.

### DETAILS

**Suggested Use Level:** 1% - 5%  
**Tenacity on Blotter:** >8 Hours

### STABILITY

pH	Base	Test Results
3	Fabric Softener	Good
3.5	Antiperspirant	Good
6	Shampoo	Excellent
7	Dish Detergent	Good
9	Laundry Detergent	Good
7	Soy Wax-Burn Performance	Excellent

### SPECIFICATIONS

**Minimum Purity:** 96.0% (sums of isomers)  
 • **Main Isomer:** 60% min. (trans iso)  
 • **Secondary Isomer:** 20% - 40% (cis iso)

**Appearance:** Pale yellow liquid

**Additives:** Synthetic alpha tocopherol at 0.50%

### TECHNICAL

**Log P:** 3.46  
**Flash Point:** 155 °F (CC)  
**Boiling Point:** 193.04 °C (EPI 4.0)  
**Vapor Pressure:** 0.348 mmHg at 20 °C  
**Solubility:** Insoluble in water; soluble in alcohol  
**Nature Identical:** Yes

### FLAVOR APPLICATION

**Taste Description:** Rich, dry, woody, cocoa powder notes.

**Flavor Use:** Excellent for adding natural cocoa powder notes to chocolate; characteristic of notes found in dark cocoa powder used in well-known baked products. Imparts dry, woody notes for blueberry and cranberry flavors. Can also be used to add lavender notes to beverages like tea and other herbal drinks.

### DETAILS

**Suggested Use Level:** 0.5 - 50 PPM

### SPECIFICATIONS

**Minimum Purity:** 97.0% (sums of isomers)  
 • **Main Isomer:** 60% min. (trans iso)  
 • **Secondary Isomer:** 20% - 40% (cis iso)

**Appearance:** Pale yellow liquid

**Additives:** Synthetic alpha tocopherol at 0.50%

### TECHNICAL

**Log P:** 3.46  
**Flash Point:** 155 °F (CC)  
**Boiling Point:** 193.04 °C (EPI 4.0)  
**Vapor Pressure:** 0.348 mmHg at 20 °C  
**Solubility:** Insoluble in water; soluble in alcohol  
**Nature Identical:** Yes  
**Kosher:** Yes  
**Halal:** Yes